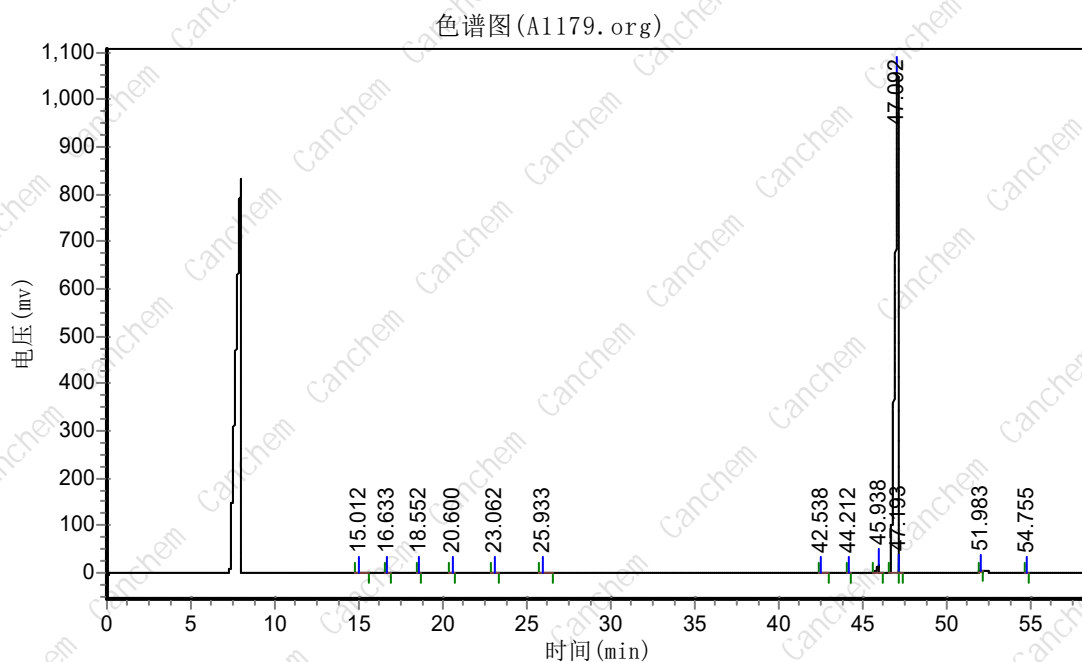


MCMS

实验时间: 2025-01-22, 8:44:19
谱图文件: d:\SP2000\样品\A\A1179.org

实验者:
报告时间: 2025-01-22, 10:30:49
积分方法: 面积归一法



分析结果表

峰号	峰名	保留时间	峰高	峰面积	含量
1		15.012	1709.389	32715.250	0.2457
2		16.633	3017.628	16970.000	0.1274
3		18.552	184.816	1164.000	0.0087
4		20.600	208.698	1856.299	0.0139
5		23.062	1588.830	12547.602	0.0942
6		25.933	393.525	5149.904	0.0387
7		42.538	344.503	618.901	0.0046
8		44.212	1572.040	7146.701	0.0537
9		45.938	16355.039	127224.781	0.9554
10		47.092	1054604.750	13078325.000	98.2096
11		47.193	3003.810	12070.126	0.0906
12		51.983	1675.048	13384.749	0.1005
13		54.755	1232.066	7567.951	0.0568
总计			1085890.142	13316741.263	100.0000

2025-01-22